



# CENTERING EQUITY IN CLIMATE ADAPTATION & RESILIENCE

*November 18, 2019*

Sona Mohnot, The Greenlining Institute  
Amea Raval, APEN



# Overview

- Welcome & overview (this!)
- Key webinar outcomes
- *Making Equity Real in Climate Adaptation Policies & Programs* – Sona Mohnot, The Greenlining Institute
- *Mapping Resilience* – Ameer Raval, Asian Pacific Environmental Network
- Recap
- Question & Answer
- Close

– Please introduce yourself in the chat box with your Name, Organization & Location –



# KEY OUTCOMES OF THIS WEBINAR

## EDUCATION AND CO-LEARNING:

- ❖ **Key takeaways from both reports** as a foundation for policy strategies to advance equity in climate adaptation and resilience efforts in CA
- ❖ **What research & data already exists & where more is needed**
- ❖ How **insights, tools and examples from CA** can serve as a model for equitable adaptation and resilience in other geographies
- ❖ How “Making Equity Real” and “Mapping Resilience” build into APEN & Greenlining’s **Theory of Change & Strategy**

# COMMUNITY RESILIENCE

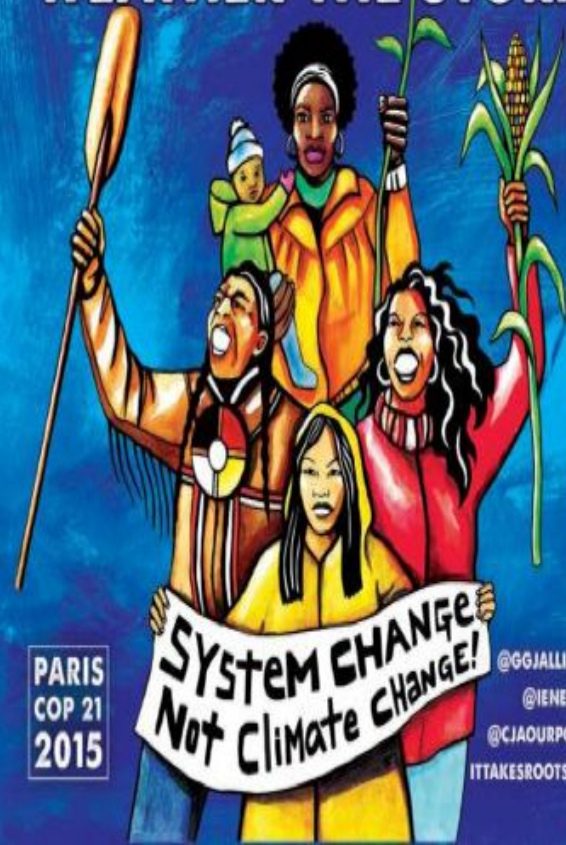


CALIFORNIA  
ENVIRONMENTAL  
JUSTICE ALLIANCE

## TRANSFORMATIVE CLIMATE COMMUNITY

Building Neighborhood-led Climate Equity

# IT TAKES ROOTS TO WEATHER THE STORM



PARIS  
COP 21  
2015

@GGJALLIANCE

@IENEARTH

@CIAOURPOWER

ITTAKESROOTS.ORG

# MAKING EQUITY REAL

in Climate Adaptation Policies & Programs

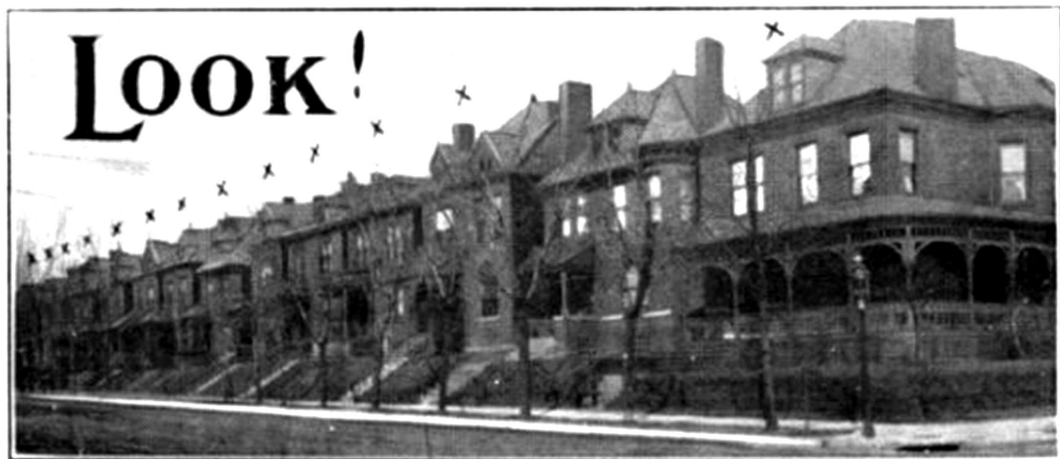
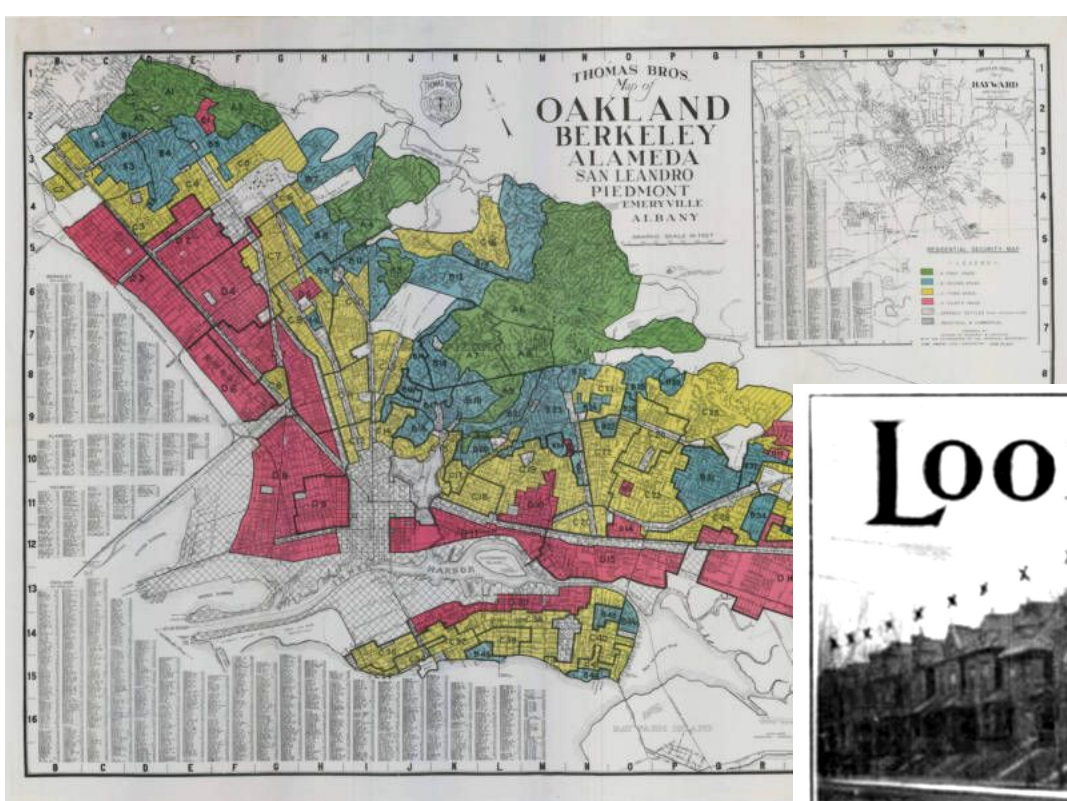


---

# PRESENTATION OUTLINE

- Why **Social Equity Matters** in Climate Adaptation and Resilience
- Introduction to **Making Equity Real** Framework
- Application of Framework to Create a **Climate Resilient and Equitable Future**





**LOOK At These Homes NOW!**

An entire block ruined by negro invasion. Every house marked "X" now occupied by negroes. ACTUAL PHOTOGRAPH OF 4300 WEST BELLE PLACE.

**SAVE YOUR HOME! VOTE FOR SEGREGATION!**









NEW DEVELOPMENTS

## HOW CLIMATE CHANGE IS HURTING MINORITY COMMUNITIES

LIVE



8:52 AM ET

RIGHT NOW DALLAS 78° LOS ANGELES 58° PHOENIX 69°

PAPERS PUBLISH THEIR LETTERS FACEBOOK -- TIPPED OFF BY THREAT NEW DAY



## Houston Flooding Always Hits Poor, Non-White Neighborhoods Hardest

## More Than 40 Sites Released Hazardous Pollutants Because of Hurricane Harvey

*The New York Times*



## 'Your eyes start itching': pollution soars in Houston after chemical industry leaks



---

# EQUITY IN CLIMATE ADAPTATION AND RESILIENCE



**Build  
resilience of  
physical  
environments**



**Create better  
health  
outcomes**



**COMMUNITY  
ENGAGEMENT &  
EMPOWERMENT**



**Enhance  
economic  
opportunities**



**Reduce  
exposure to  
pollutants**

# OVERVIEW OF GUIDEBOOK

## SOCIAL EQUITY ASSESSMENT OF GRANT PROGRAMS

<i>Program Name</i>	<i>Social Equity Score</i>
CalTrans Adaptation Planning Grant Program (SB 1)	✓
CalTrans Sustainable Communities Grant Program (SB 1)	✓✓
SGC Transformative Climate Communities Program	✓✓✓

## SOCIAL EQUITY ASSESSMENT OF POLICIES

<i>Policy Name</i>	<i>Social Equity Score</i>
B-30-15	✓
B-52-18	✓
B-18-12	✗

---

# MAKING EQUITY REAL

1. GOALS, VISION,  
VALUES

2. PROCESS

3. IMPLEMENTATION

4. ANALYSIS

# STEP 1:

# HOW TO DEVELOP EQUITABLE GOALS, VISION, AND VALUES



Los Angeles Countywide Sustainability Plan



**Goal 1: Resilient and healthy community environments where residents thrive in place**

The County will protect low-income communities and communities of color from pollution, reduce health and economic inequities, and support more resilient and inclusive communities.



**Goal 3: Equitable and sustainable land use and development without displacement**

With policy tools such as anti-displacement measures, existing community members can remain in and strengthen their neighborhoods and networks while accepting new residents through more compact, mixed-use development.



**Goal 4: A prosperous LA County that provides opportunities for all residents and businesses and supports the transition to a green economy**

We will support the growth of green economy sectors through our procurement practices, land use authority, and various economic and workforce development incentives.



**Goal 8: A convenient, safe, clean, and affordable transportation system that enhances mobility while reducing car dependency**

By developing programs that focus on reducing the number of miles people travel in private vehicles, the County will help people choose alternatives to single-occupancy vehicles. These programs will expand residents' mobility, including those residents whose limited automobile access translates to stifled economic opportunity.



**Goal 11: Inclusive, transparent, and accountable governance that facilitates participation in sustainability efforts, especially by disempowered communities**

The County will act to create a more inclusive and accountable governance structure, in order to build stronger communities and better-informed policy and programs.



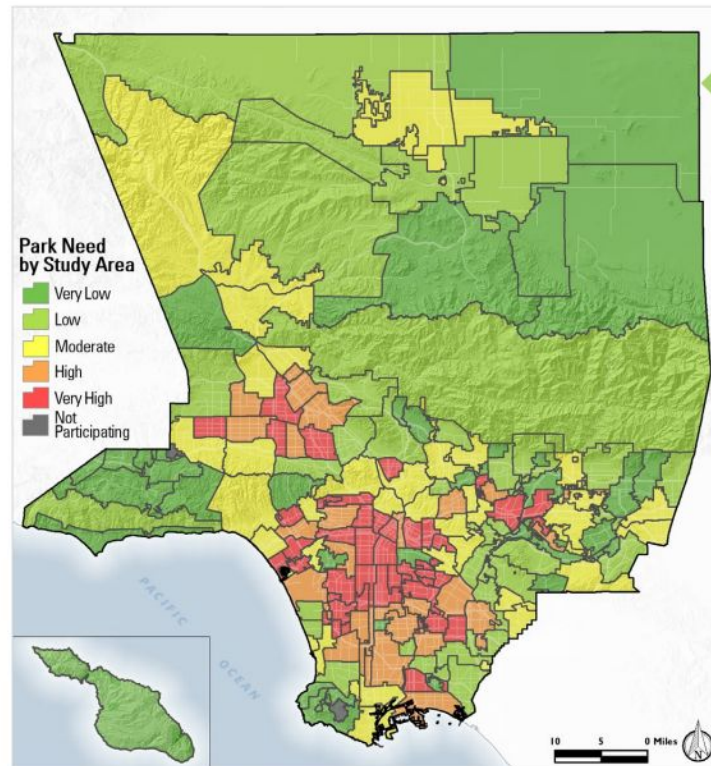
**Goal 10: A sustainable and just food system that enhances access to affordable, local, and healthy food**

The County of Los Angeles will leverage its capital assets, public services, and regulatory authority to improve access to healthy food within County boundaries while optimizing its purchasing power and business services to make food production more sustainable.

# STEP 2:

# HOW TO DEVELOP AN EQUITABLE PROCESS

## COMMUNITY NEEDS ASSESSMENT





## STEP 3:

# HOW TO CENTER EQUITY IN IMPLEMENTATION



# STEP 4:

# HOW TO MEASURE AND ANALYZE EQUITY PROGRESS

## San Francisco Office of Racial Equity created by unanimous vote

August 28, 2019

< Share



---

# MAKING EQUITY REAL

1. GOALS, VISION,  
VALUES

2. PROCESS

3. IMPLEMENTATION

4. ANALYSIS

---

# THANK YOU!

Sona Mohnot  
sonam@greenlining.org

---



Greenlining ***Making Equity Real*** Guidebook answers...

**HOW** do we design climate adaptation policies and programs to center the most impacted communities?

APEN ***Mapping Resilience*** Report answers...

**WHO** and **WHERE** are those communities disproportionately impacted by climate threats?



---

# THE CLIMATE GAP

*Climate Disasters Have **Unequal** Impacts  
And Act as a **Threat Multiplier***

---



**During California wildfires, farmworkers say they felt pressure to keep working or lose their jobs**



**Amid Worst Winter Wildfires in California History, Farmworkers Are Laboring in Hazardous Air**

**As California Burns, Undocumented People Face Gap in Recovery Aid**





**\$1 an Hour to Fight Largest Fire in CA History: Are  
Prison Firefighting Programs Slave Labor?**





Homeless people search for shade during heat wave. City says not hot enough for cooling centers

'Homeless again.' California fires leave poor with bleak prospects



**360,000 Californians have unsafe drinking water.  
Are you one of them?**



**California's Drought Is So Bad That Thousands  
Are Living Without Running Water**



**A small town in California has sunk more than 2 feet in the  
past decade, and it could be part of a disturbing trend**



2:32

---

# THE PATH FORWARD

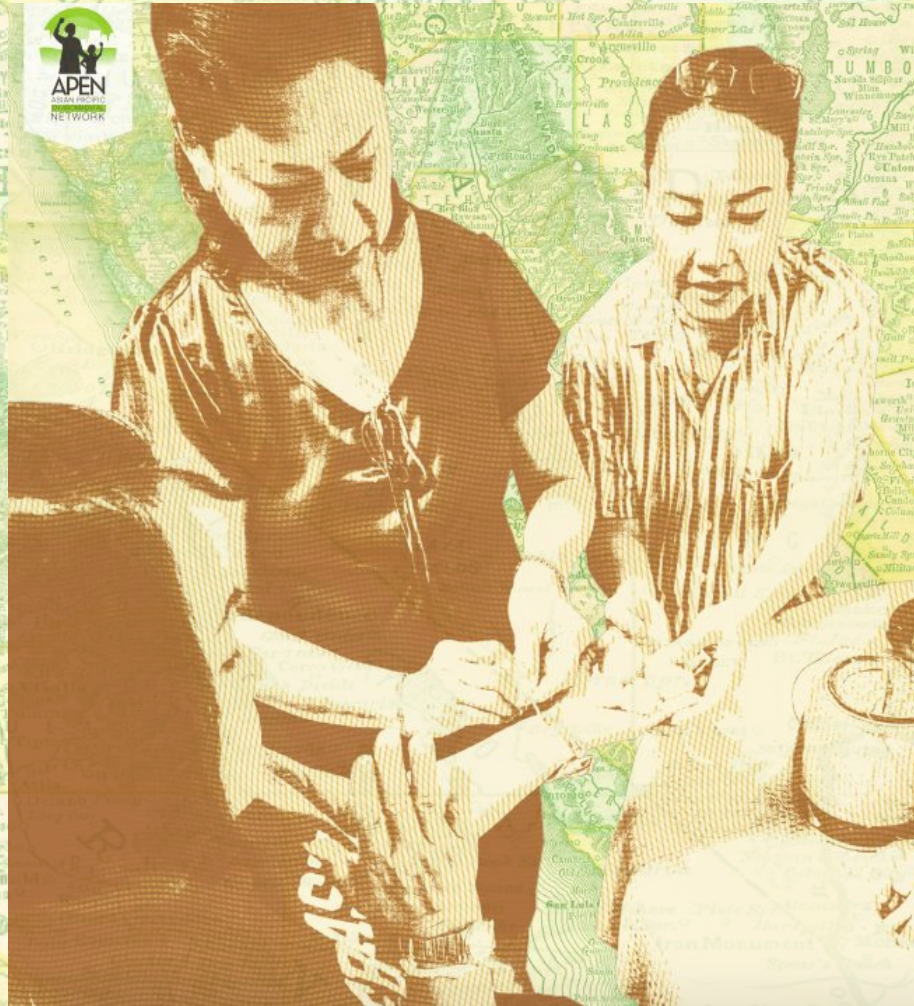
*Recognizing this gap, what can we do to address these unique risks, protect those most impacted, and create opportunities to thrive?*

---

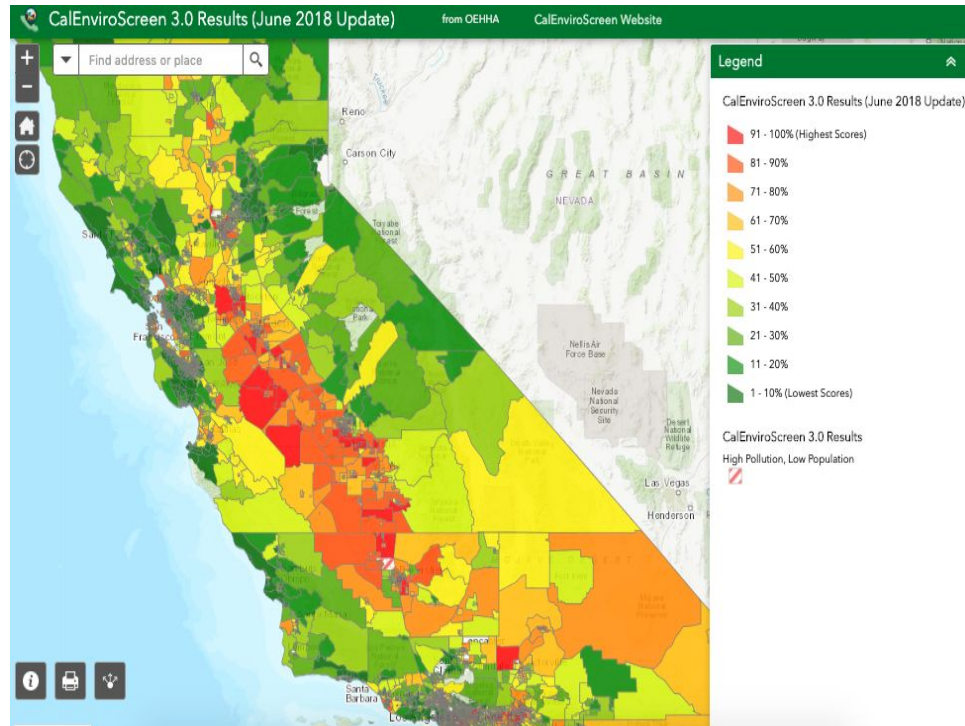
# MAPPING RESILIENCE

A Blueprint for  
Thriving in the Face of  
Climate Disasters

[apen4ej.org/map](http://apen4ej.org/map)



# CONTEXT: CALENVIROSCREEN UPLIFTS ENVIRONMENTAL JUSTICE IN STATE POLICY



# THE REPORT

- ❖ Background on communities disproportionately impacted by climate change-related threats in California and beyond
- ❖ Key definitions and principles for vulnerability and resilience
- ❖ Review of over 40 existing indicators, data, tools, frameworks
- ❖ Data limitations and knowledge gaps
- ❖ Lessons learned from development and use of indicators in related fields
- ❖ Anticipated uses of indicators to advance key fields and policies

# CLIMATE VULNERABILITY SHOULD BE ASSESSED BY REGION AND CLIMATE THREAT

- ❖ Climate impacts vary based on biophysical setting, climate, and jurisdictional factors
- ❖ Regional variations caution against making statewide comparisons
- ❖ Warrants regional and climate impact-specific lens
- ❖ Supports applying data as land use planning occurs regionally and locally

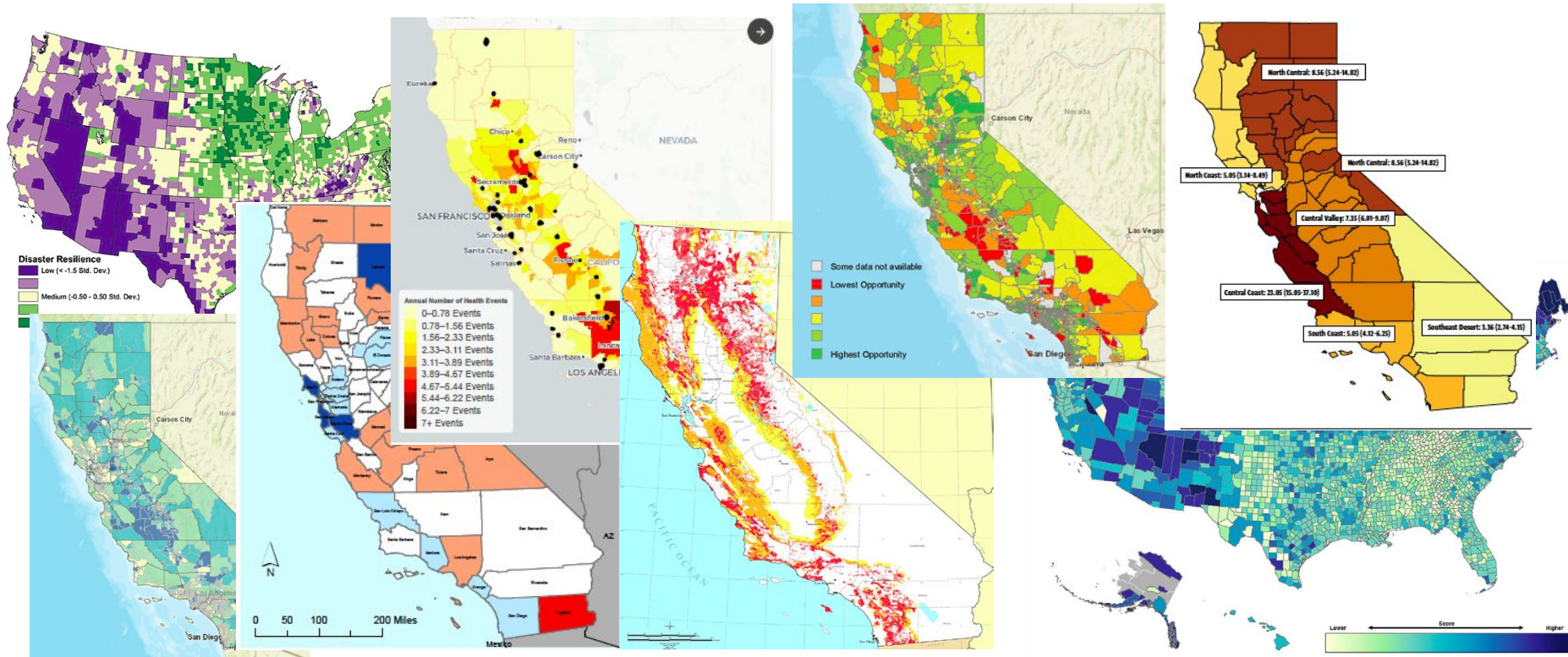


# SPECIFIC CLIMATE THREATS





# VARIED LANDSCAPE OF FRAMEWORKS



## VARIED LANDSCAPE OF FRAMEWORKS

### ❖ Strong Comprehensive Frameworks

- Public Health Alliance of Southern California **California Healthy Places Index**
- CalBRACE **Climate Change Health Vulnerability Indicators**
- CA Energy Commission **Social Vulnerability to Climate Change**
- **Climate Change Vulnerability Screening Index** (English et al.)

### ❖ Strong Impact-Specific Frameworks

- 427 **Climate Heat Assessment Tool** (CHAT)
- Climate Central **Surging Seas** Risk Zone Map

## NO MORE DATA, NO MORE TOOLS

- ❖ Rich volume of existing frameworks to identify people and places most impacted by climate threats
- ❖ Significant redundancy of indicators across frameworks
- ❖ Enough underlying data, established indicators, and methodologies asserting relevant factors
- ❖ **No imminent need for researchers to create a wholly new set of climate vulnerability indicators in California**

## A CENTRALIZED MAPPING PLATFORM IS NEEDED

- ❖ Lack of comprehensive framework(s) to connect and overlay social vulnerabilities and climate threats
- ❖ Lack of consistency across multitude of frameworks
- ❖ No single set of indicators captures the most significant factors
- ❖ Availability of so much data is leading to paralysis of action
- ❖ Policymakers would benefit from **streamlined, actionable** framework that compiles key indicators into a single interface
- ❖ Mirrors and complementary to CalEnviroScreen

## A CENTRALIZED MAPPING PLATFORM IS NEEDED

- ❖ This platform would include indicators for:
  - **Exposure** (temperature, wildfire threat, flood risk, drought)
  - **Population Sensitivity** (poverty, linguistic isolation, elderly, disability)
  - **Adaptive Capacity** (tree canopy, vehicle access, medical facilities)
- Automatically populate relevant indicators based on selected climate impact
- **Be informed by a complementary policy framework identifying priority issues, programs, policies, and funding opportunities**

## MAPPING ALONE DOES NOT TELL THE FULL STORY

- ❖ Many factors and trends are overlooked or reflect data inaccuracies
- ❖ Many population sensitivity indicators, but fewer for adaptive capacity (e.g., transportation access, cooling centers, evacuation shelters)
- ❖ Other gaps:
  - Certain **climate impacts**: drought vulnerability, air quality
  - **Health outcomes**: infectious diseases, mental health
  - **Socioeconomic factors**: informal workers, undocumented immigrants, homelessness

## **WE MUST GROUND-TRUTH AND COMPLEMENT MAPS WITH COMMUNITY EXPERTISE**

- ❖ Data limitations should caution against relying on any single framework to identify and capture all factors
- ❖ Public officials should integrate quantitative information with experiential knowledge and community stories
- ❖ Ensures public processes involving climate vulnerability mapping are inclusive and participatory

## DATA IS POWERFUL

- ❖ Depicts the interacting and cumulative impacts of climate change
- ❖ Operationalizes addressing underlying systemic inequalities alongside growing climate threats
- ❖ Supports **identifying vulnerable communities** for the sake of targeting resources, services, and projects

## POLICY OPPORTUNITY



## VULNERABILITY IS A CONSEQUENCE, NOT A CONDITION

“Conventional approaches to adaptation and mitigation view vulnerability as a characteristic or condition of groups of people and not as a circumstance or consequence of the ways social groups have been historically and systemically marginalized and excluded from opportunity.

As a result, the policy and practices that have been brought to bear don't address the underlying historical roots of vulnerability. These views exclude these groups from having a voice in setting policy priorities or allocating resources to address the issues. **Rather than being viewed as victims to be protected and saved, vulnerable communities should instead define, develop, and drive the solutions.”**

---

## GUIDING QUESTIONS TO CONSIDER . . .

- ❖ With this information, **what actionable steps can you take to integrate an equity lens** into your work now?
- ❖ **What opportunities are there within your current work** to advance the reports' recommendations?
- ❖ **Which vulnerable populations may be impacted by or could benefit** from your work?

## FOR MORE INFORMATION..

- ❖ **APEN** *Mapping Resilience* report:  
<https://apen4ej.org/mapping-resilience/>
  - Ameer Raval, [amee@apen4ej.org](mailto:amee@apen4ej.org)
- ❖ **Greenlining Institute** *Making Equity Real* report:  
<https://bit.ly/2NILXUe>
  - Sona Mohnot, [sonam@greenlining.org](mailto:sonam@greenlining.org)
- ❖ **Climate Advocacy Lab:** [info@climateadvocacylab.org](mailto:info@climateadvocacylab.org)

---

# THANK YOU!



# Q&A



---

# THANK YOU AGAIN!

- ❖ Ameer Raval, [amee@apen4ej.org](mailto:amee@apen4ej.org)
- ❖ Sona Mohnot, [sonam@greenlining.org](mailto:sonam@greenlining.org)
- ❖ Lucía Oliva Hennelly, [lucia@climateadvocacylab.org](mailto:lucia@climateadvocacylab.org)

**We appreciate your feedback!**

<https://forms.gle/BdpQjbxBAWvSpMYd7>